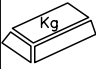

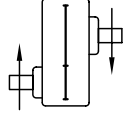


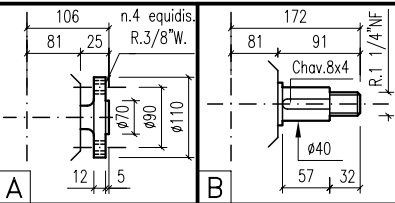
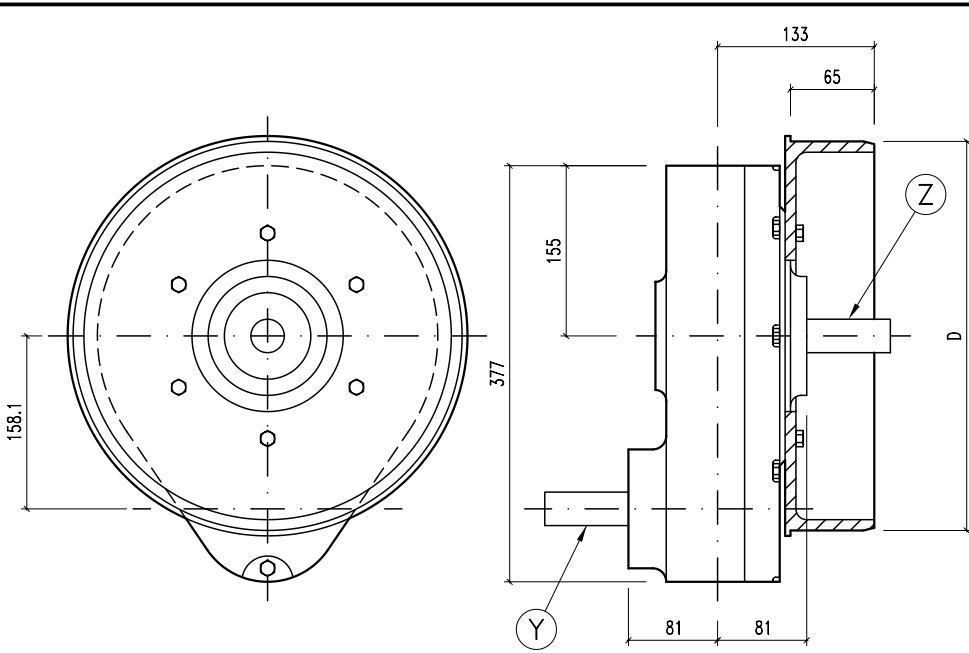
# CAJA P 15-30

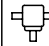
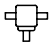
## ALGUNAS POSIBILIDADES DE USO:

\* Tolva para silos.

	52
	SAE 90

25					



i	r.p.m.	HP	KW	X	Y	Z	ARMADO	ENTRADA	D	FG			
											CODIGO		CODIGO
4,22:1	540	30	22,07		B	A	25	Y	segun necesidad		25 441	