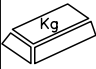



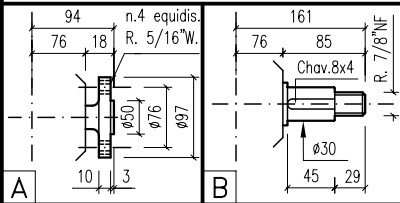
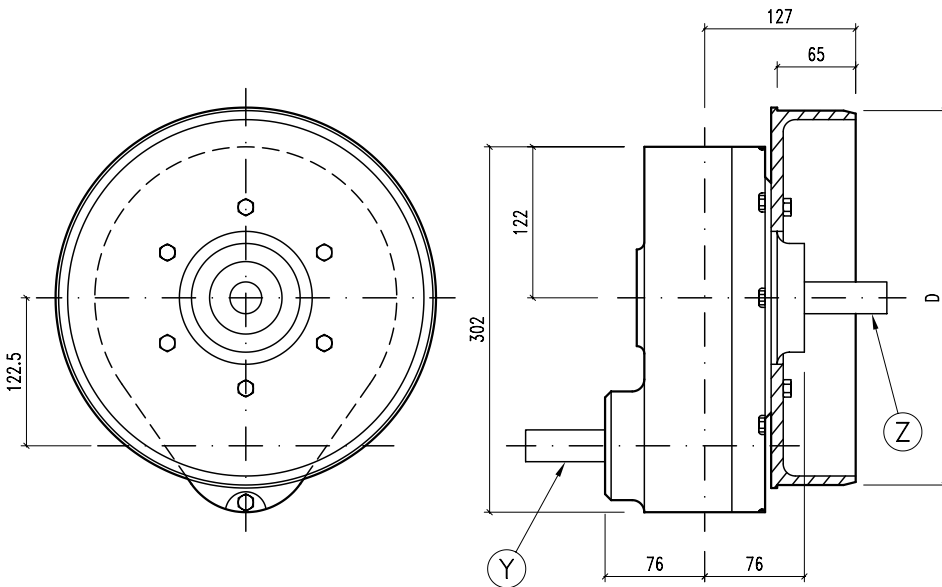
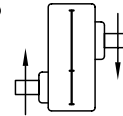
# CAJA P 5-10

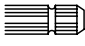

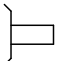
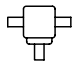
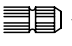



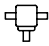
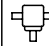

## ALGUNAS POSIBILIDADES DE USO:

\* Tolva para silos.

	36,5
	SAE 90

25



														
	i	r.p.m.	HP	KW	X	Y	Z	ARMADO	ENTRADA	D		CODIGO		CODIGO
	3,78:1	540	10	7,36		B	A	25	Y	segun necesidad	25	440		

