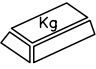



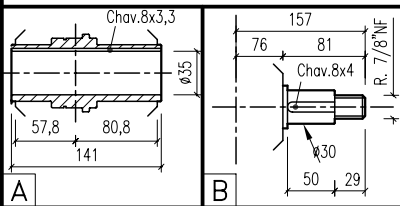
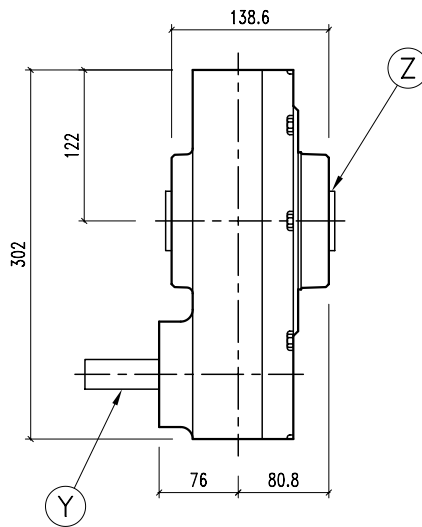
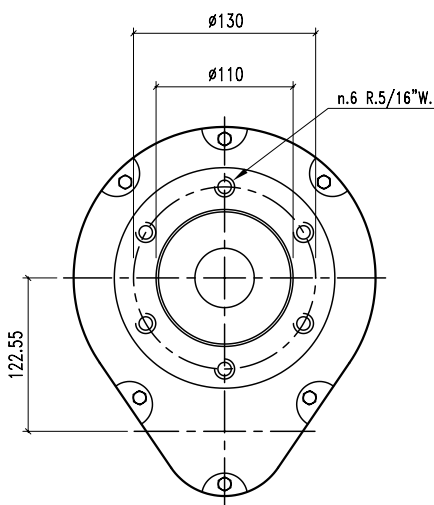
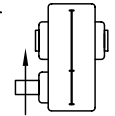
CAJA P 5-10 90

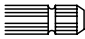

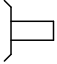
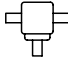
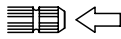


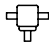
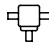

ALGUNAS POSIBILIDADES DE USO:

* Cintas transportadoras

	22,5
	SAE 90

34



													
	i	r.p.m.	HP	KW	X	Y	Z	ARMADO	ENTRADA		CODIGO		CODIGO
	3,78:1	540	10	7,36		B	A	34	Y	34	684		

